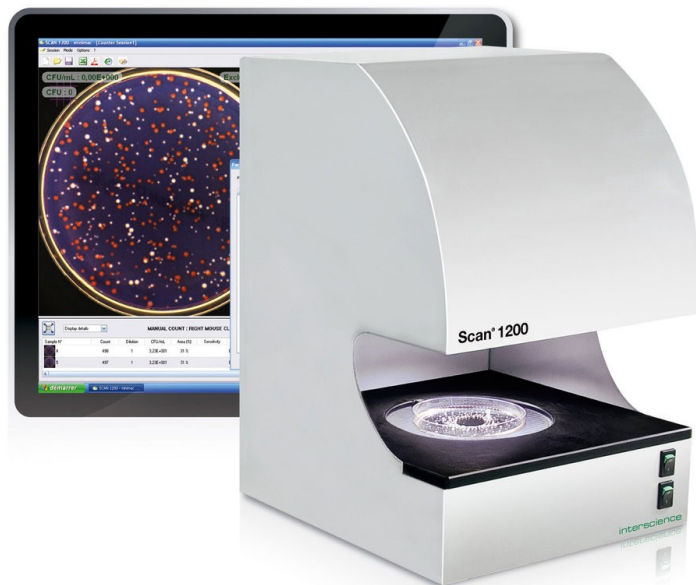


Scan 1200



Automatic HD colony counter

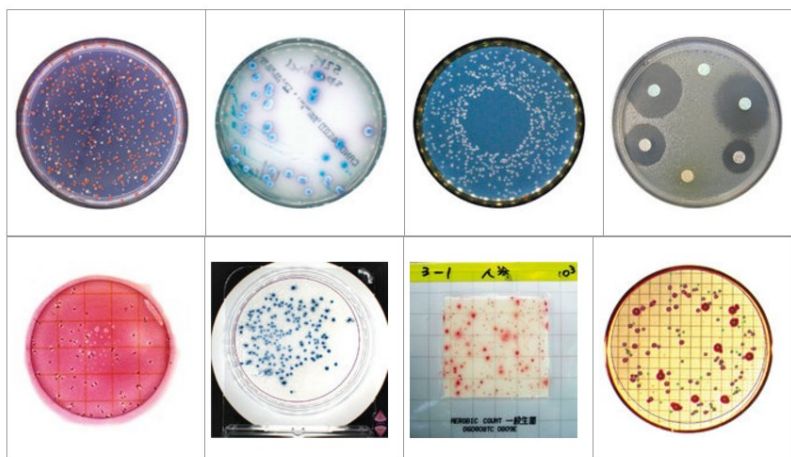
Scan 1200 is a high resolution automatic color colony counter with automatic lighting. Widely used in food microbiology, it counts colonies and automatically saves all data to Excel. Equipped with a camera and a software, it connects to a PC via a Firewire connection.

Features

1. HIGH RESOLUTION & PERFORMANCE

- Minimum colony size: 0.05 mm
- 1000 colonies CFU detected in 1 second
- Live image (zoom x28)
- Counts 30 dishes in 5 minutes (in real conditions with presettings)
- Fully automatic lighting: lights controlled by computer and motorized background color

2. COUNTS ON:



3. SOFTWARE EFFICIENCY

- All functions in 1 window
- Automatic optimization of the contrast, luminosity and sensitivity
- Automatic corrections of the agar defects
- Automatic separation of confluent colonies
- Automatic elimination of counting grids
- Cross on each counted colony
- Polygonal exclusion areas
- Pre-set medias: PCA/TSA, MRS, VRBL, TBX, TSC, Baird Parker, GVPC, L.Mono, YM

4. INHIBITION ZONE, AGAR WELL

- Rapid detection: up to 8 antibiotic sensitivities in 1 click
- Inhibition zones and agar wells can be manually added or deleted
- Built-in antibiotic database (CA-SFM, French Society of Microbiology)
- Precision of inhibition zone measurement: 0.1 mm
- Precision of agar well measurement: 0.1 mm



Scan 1200

5. FULL TRACEABILITY

- Harmonization of the results within a team
- Automatic archiving and printing of data: pictures, comments & results
- External traceability (Session saved, Excel, PDF, JPEG, BMP, Scan printed report)
- Internal traceability (Barcode, file archive, LIMS connection)
- Securitization of the sessions (Compliance with CFR 21 part 11: system securitization, operational controls and documentation management)

6. EXCELLENT REPRODUCIBILITY AND REPEATABILITY

- GLP (Good laboratory Practice)
- CFR 21 Part 11

Scan SOFTWARE

Scan automatic colony counters use an exclusive software developed by INTERSCIENCE: evolutive, user-friendly and powerful.

There are numerous advantages in using Scan counting software:

- Only one clic to count
- Only one setting cursor
- Traceability: automatic saving of data, Excel export

1. VISUALISATION WINDOW

Detected colonies are highlighted and marked with a cross.

2. PARAMETERS WINDOW

Only one cursor to optimize counting. customizable settings adaptable to any kind of agar.

3. RESULTS WINDOW

All previously recorded data can be checked anytime.

EASY DATA EXPORT

Scan software provides easy ways to export quickly your results:

- Work sessions saving
- PDF export
- JPEG, BMP export
- Results exported to Excel
- Scan printed report

TECHNICAL SPECIFICATIONS

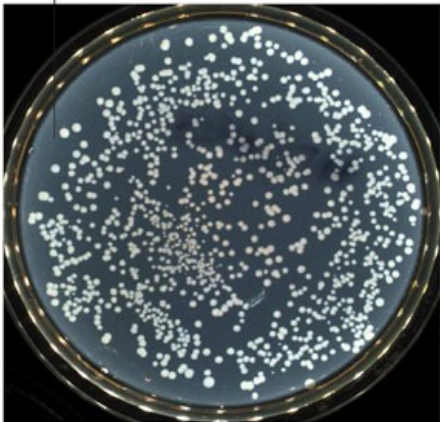
- All stainless steel body
- Color HD CCD camera
- HD japanese lens
- Digital zoom x28 (enabling to read the letters on the disks)
- Resolution : 1.2 mega-pixels
- Counting time: 1000 colonies per second
- Minimum size of colony: 0.05 mm
- Lighting system: long-life white LEDs / Dark Field
- Lighting system: automatic 6 combinations, top and/or bottom light, white or black background
- Counting: automatic with manual control
- Results / data export: Scan recountable file, PDF report, jpeg, png, bmp, Excel
- LIMS connection
- USB connection
- Counting on Petri dishes (55 - 90 mm)
- Spiral plating
- Color detection: 7 colors on the same dish
- Counting on chromogenic medium
- Inhibition zone measurement
- Counting on PetriFilm
- Counting on RIDA Count
- Counting on Compact Dry
- Counting on filtration membrane
- Automatic separation of confluent colonies
- Automatic elimination of counting grids
- Polygonal exclusion areas
- Automatic detection of paper disks (all brands simultaneously), wells, peni-cylinders (steel, plastic), customizable, add/substract manually
- Inhibition zone reader : automatic with possible manual check-up
- Number of antibiotic paper disks: up to 8 antibiotics on a 90 mm Petri dish
- Reading time: 8 inhibition zone reading in 1 - 3 seconds
- Interpretation system : CA-SFM Human health / EUCAST / CA-SFM Veterinary / customizable list
- Security of data: saving of all changes in compliance with CFR 21 recommendations /
- Results / Traceability : image / sample number & antibiotic name / bacteria name / read diameter / result with category SIR by color code (Sensitive / Intermediate / Resistant) / critical diameter mini and maxi / comments / date / time
- Software available in french, english, spanish, japanese, chinese, russian
- Power : 100-240V~ / 50-60Hz
- Dimensions : (W x D x H) : 28 x 27 x 38 cm, weight : 9.3 kg
- Box : (W x D x H) : 42 x 42 x 56 cm, weight : 13 kg
- Guarantee (after registration): 3 year
- Software update (after registration): 3 year
- In compliance with CFR 21 part 11, EUCAST, CA-SFM, ISO 7218, ISO 4887-2
- Designed and made in France
- Manufactured under: ISO 9001 V2008, CE, WEEE 2002/96/EC, RoHS 2002/95/EC standards



Scan 1200

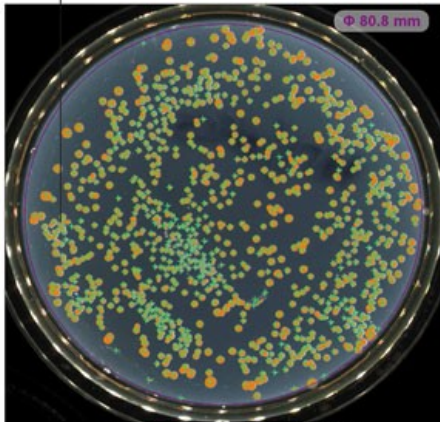
EXAMPLE OF A SCAN PRINTED REPORT

Petri dish before counting



Sample

Petri dish after counting



Sample analysed with SCAN 1200®

Sample information

Sample N°:	1	Count :	915	Dilution :	1/10	CFU/mL :	1.14E+004
Parameters :	GL Lyon	Area (%) :	81 %	Sensitivity :	37		
Date Time :	15/05/2009 15:47:28						

Comments

Comment :

1 CFU added manually --

Analysis result

Printed report example



Scan 1200

Scan 1200	
Reference	437 000
Camera	HD CCD color camera
Digital zoom	x 28
Resolution	1.2 megapixels
Counting time	1000 colonies per second
Minimum size of colonies	0.05 mm
Lighting technology	Long-life white LEDs / Dark Field
Lighting system	Automatic 6 combinations, top and/or bottom light white or black background
Counting	Automatic, with manual control
Results / data export	Scan recountable file, PDF report, JPEG, PNG, BMP, Excel
Color detection	7 colors on the same Petri dish
Chromogenic medium	✓
Inhibition zones	✓
Petri dishes	55-90 mm
Spiral plating	✓
PetriFilm	✓
RIDA Count	✓
Compact Dry	✓
Filtration membrane	✓
LIMS connection	✓
Languages	English, French, Japanese, Chinese, Russian, Spanish
Dimensions (w x d x h)	27 x 27 x 38 cm
Weight	8.7 kg
Body	Stainless steel
Computer connection	USB
Power	100-240 V 50/60 Hz
Processor	Intel Core i3, i5 or i7 or AMD FX series 8000 or better
Operating systems	Windows: 7 SP1, 8 or superior
Frequency	2,5 Ghz or better
RAM	4 Go or better
Graphic card	NVIDIA or AMD (ATI)
Equipment	CD ROM drive, USB slot 2.0 minimum
Screen	1280 X 1024 pixels or better recommended



Scan 1200

	Scan 300	Scan 500	Scan 1200
Reference	436 300	436 000	437 000
Camera	CMOS color camera	CMOS color camera	HD CCD color camera
Digital zoom	x 28		x 28
Resolution	1 megapixels	1 megapixels	1.2 megapixels
Counting time	1000 colonies per second		
Minimum size of colonies	0,1 mm		0,05 mm
Lighting technology	Long-life white LEDs / Dark Field		
Lighting system	6 combinations, top and/or bottom light white or black background		Automatic 6 combinations, top and/or bottom light white or black background
Counting	Automatic, with manual control		
Results / data export	Scan recountable file, PDF report, JPEG, PNG, BMP, Excel		
Color detection	-	7 colors on the same Petri dish	
Chromogenic medium	-	✓	
Inhibition zones	-	✓	
Petri dishes	55-90 mm		
Spiral plating	✓		
Petrifilm	-	✓	
RIDA Count	-	✓	
Compact Dry	-	✓	
Filtration membrane	-	✓	
LIMS connection	✓		
Languages	English, French, Japanese, Chinese, Russian, Spanish		
Dimensions (w x d x h)	27 x 27 x 29 cm		27 x 27 x 38 cm
Weight	6,6 kg		8,7 kg
Body	Stainless steel		
Computer connection	USB		
Power	100-240 V 50/60 Hz		
Operating systems	Windows: 7, 8 or superior		
Processor	Intel (recommended) or others, 2 GHz or better		Intel Core (recommended) or AMD Phenom and superior, 2 GHz
RAM	2 Go		2 Go
Equipment	CD ROM drive		
Screen	1280 X 1024 pixels or better recommended		
Computer	Desktop computer recommended		